

# PROTOS

## SOLAR LUMINAIRE

### PROJECT NAME

Type \_\_\_\_\_

Date \_\_\_\_\_

### SPECIFICATIONS



<b>Source</b>	LED
<b>CCT</b>	3000K standard
<b>Efficiency</b>	172.4–200lm/W at 600mAH
<b>Power</b>	Max 100W
<b>L80 Life</b>	> 75,000 hours
<b>Location</b>	Listed IP67
<b>Solar Module Performance</b>	Monocrystalline silicon cells, processed by Photinus 1 solar modules x 150–250 Wp*, modules also charge in cloudy conditions
<b>Luminaire</b>	Final luminaire dependent on install location and desired lumen output. Less direct solar intake may require larger solar panel.
<b>Battery</b>	LiFeP04 / 474 Wh (12.8 V 37Ah) LiFeP04 / 1152 Wh (12.8 V 90Ah)
<b>Operating Temperature</b>	-20°C to +60°C (-4°F to +140°F) [-40°C/-40°F available upon request]**
<b>Battery Life</b>	Up to 10 years
<b>Protection Class</b>	IPX8
<b>Material</b>	Steel pole and aluminum parts
<b>Finish</b>	Galvanized and powder coat
<b>Weight Solar Module</b>	18.7 lb – 34.6 lb. [8.5kg–15.7kg]
<b>Weight Light Housing</b>	7.3 lb – 8.1 lb. [3.3kg–3.7kg]
<b>Wind Load</b>	68.3 mph***
<b>Salt Spray Test</b>	ISO 9227:2012
<b>Warranty</b>	3 Years

\* Wp = Watt Peak: maximum power supplied in standard conditions.

\*\* Lower/Higher operating temperatures available upon request.

\*\*\* Other wind loads available upon request.

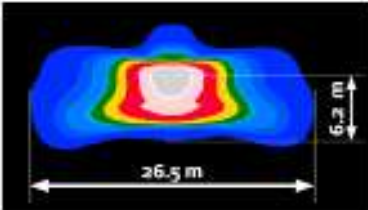
### ORDER CODE

Model	Type	Head	C.C.T.	Lumen Output	Optic	Time Management	Wind Load	Mounting	Finish	Options	Location
<b>PROTOS</b>	<b>SOL</b> = Solar <b>HYB</b> = Hybrid Solar & Power Grid	<b>S</b> = Single <b>D</b> = Dual	<b>30</b> = Standard 3000K <b>20</b> = 2000K <b>40</b> = 4000K <b>50</b> = 5000K <b>AB</b> = Amber	<b>[X] LM</b> = Provide desired Lumen Output per head	<b>ME PLACE</b> <b>T2</b> <b>T2-B</b> <b>T2-L</b> <b>T3</b> <b>T3-B</b> <b>T3-L</b> <b>T4-B</b> <b>DWC</b> <b>SCL</b> <b>DWCSCSCL</b> <b>FW</b> <b>VM</b> <b>PX</b>	<b>V5</b> = Standard Setting <b>V3</b> = Continuous lighting 100% <b>V3M</b> = Light-on-Demand, requires <b>PIR/PILG</b> option, reduction to 10% and activated at 100% when triggered <b>V4</b> = Night-time reduction to 40% <b>V6</b> = Night-time reduction to 0% * consult factory for other time management options	<b>W68</b> = Standard 68.3 mph <b>WLC</b> = Custom*  *specify desired wind load. consult factory	<b>PF</b> = Pipe Foundation <b>ABO</b> = Anchor Base with Opening** <b>ABC</b> = Anchor Base Closed**  **ABO/ABC surface mount available upon request. consult factory	<b>D</b> = Dark	<b>[blank]</b> = None <b>AGS</b> = Anti Glare Shield <b>PIR/PILG</b> = Sensor	<b>ADDRESS</b> = Provide Full Address of installation

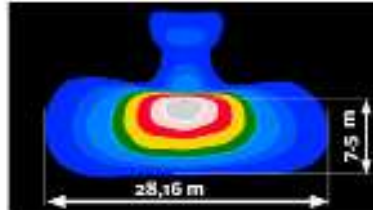
Example order code: **PROTOS – SOL – S – 30 – 3000LM – DWCSCL – V3M – WLC90mph – PF – D – PIR/PILG – JOHN ROSS PKWY, PMB 29, ROCK HILL, SC 29730**

**PHOTOMETRICS**

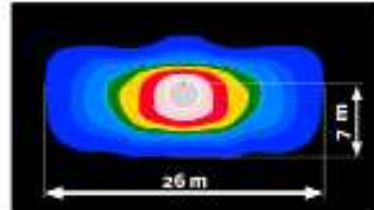
**ME PLACE**



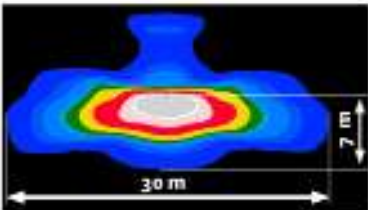
**T3**



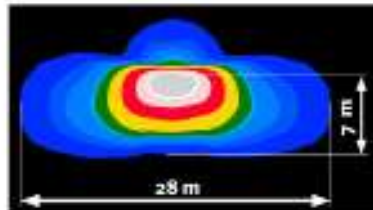
**DWC**



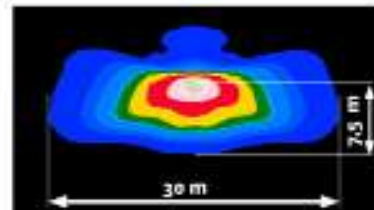
**T2**



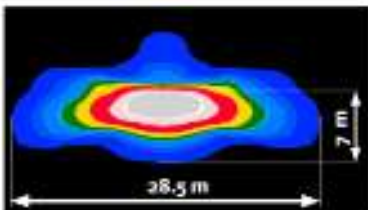
**T3-B**



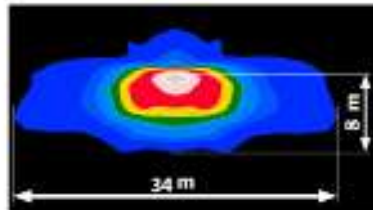
**SCL**



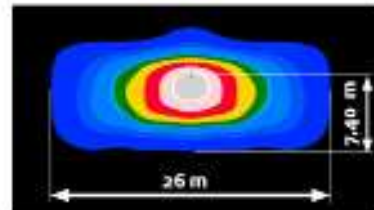
**T2-B**



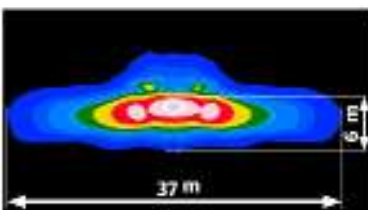
**T3-L**



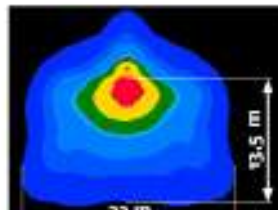
**DWC SCL**



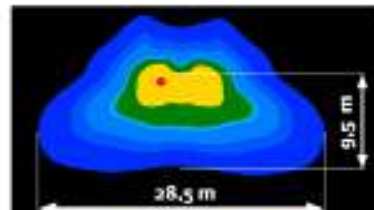
**T2-L**



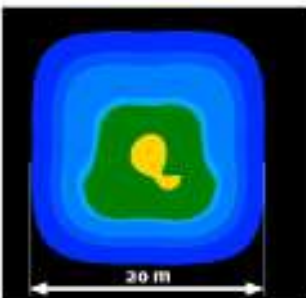
**T4-B**



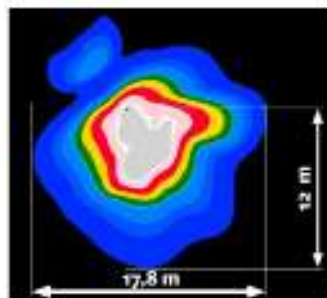
**FW**



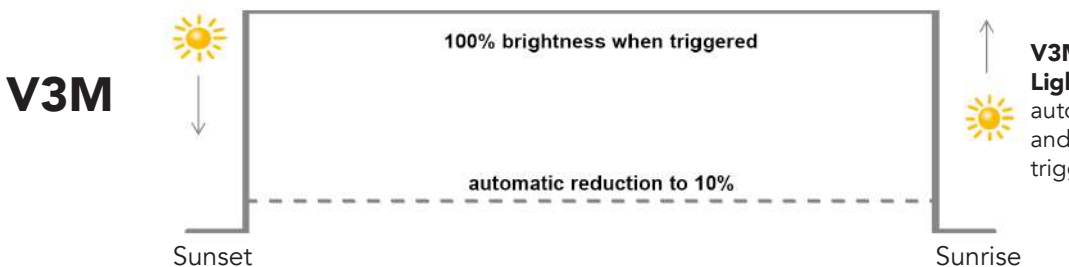
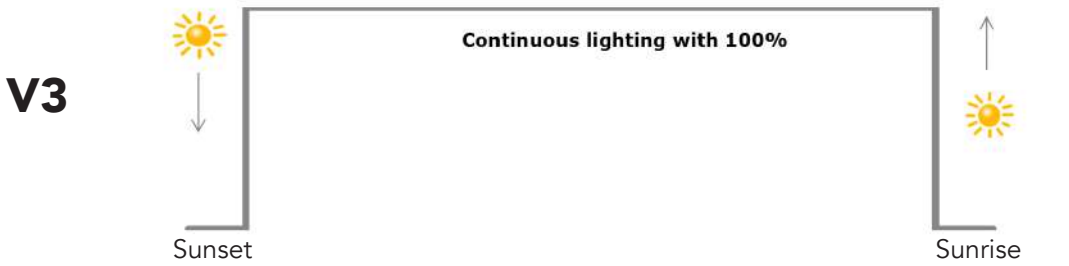
**VM**



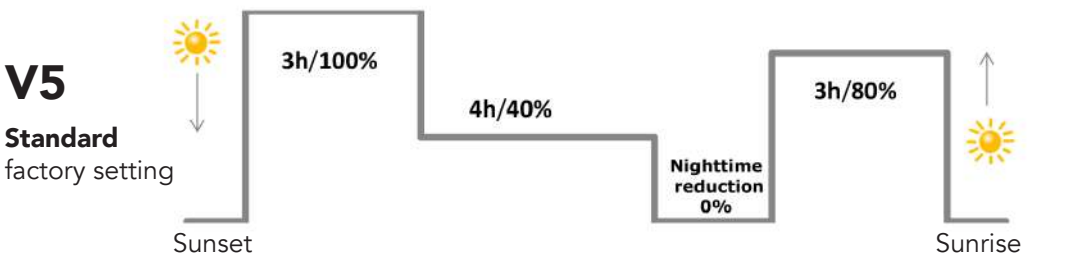
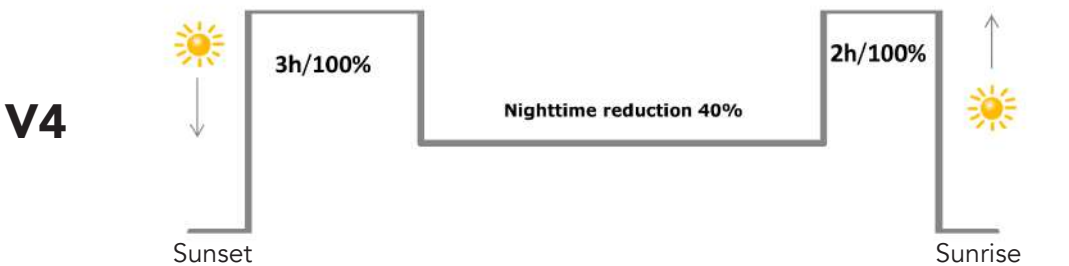
**PX**



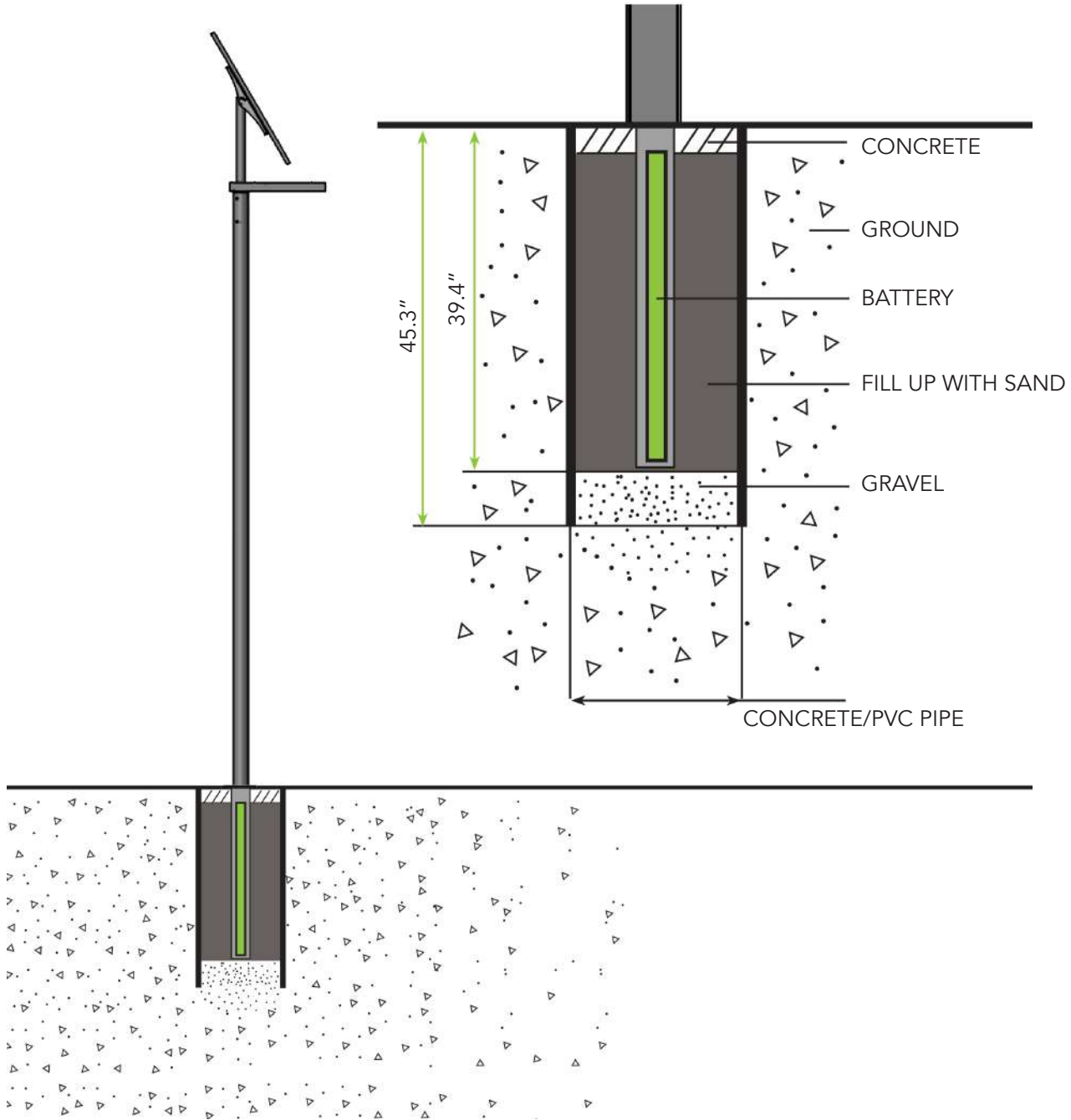
**ENERGY AND TIME MANAGEMENT**



**V3M**  
**Light-on-Demand functionality**, with automatic reduction to 10% brightness and full activation at 100% when triggered. **Requires PIR/PILG sensor.**

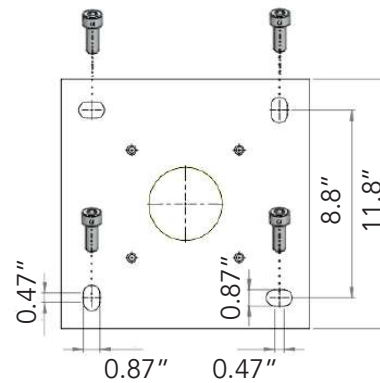
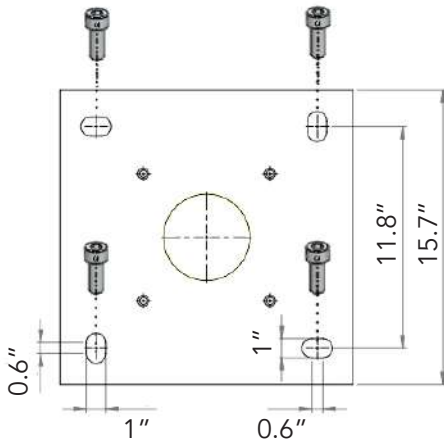
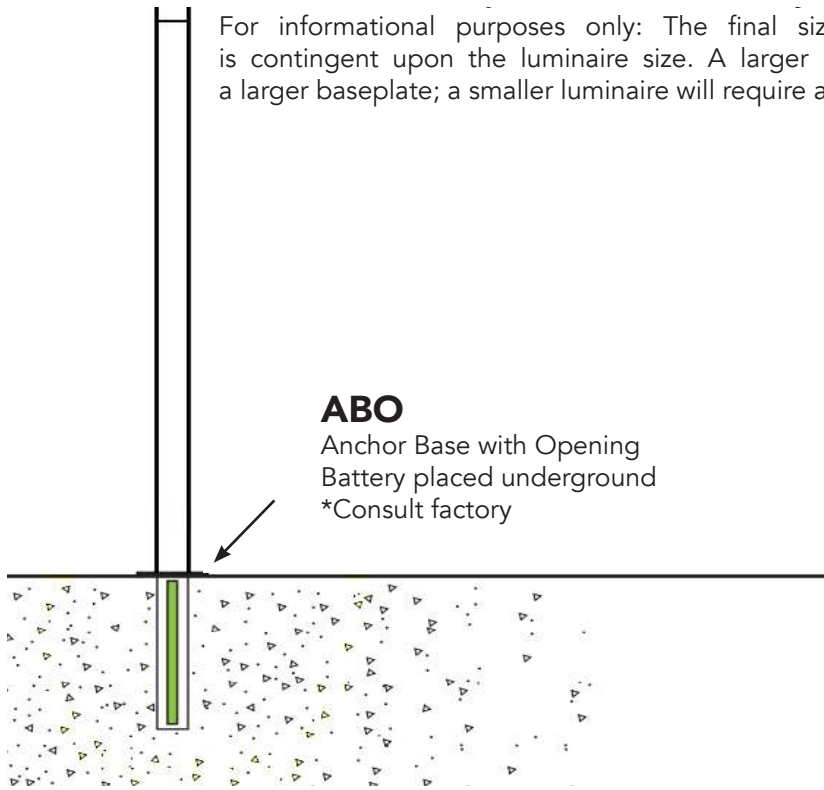


## MOUNTING OPTION 1 — PIPE FOUNDATION — PF



## MOUNTING OPTION 2 — ANCHOR BASE OPEN — ABO

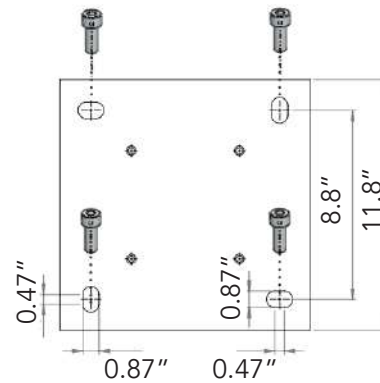
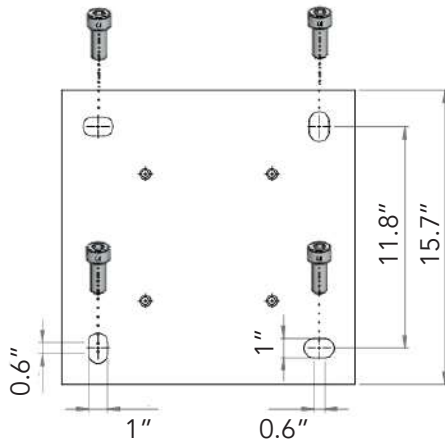
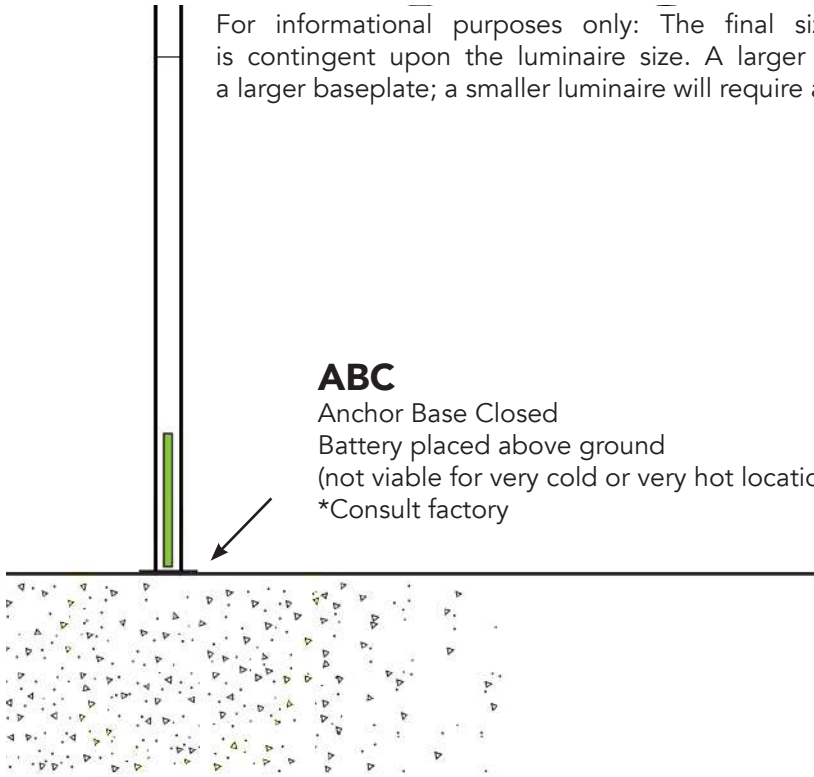
For informational purposes only: The final size of the baseplate is contingent upon the luminaire size. A larger luminaire will require a larger baseplate; a smaller luminaire will require a smaller baseplate.



## MOUNTING OPTION 3 — ANCHOR BASE CLOSED — ABC

For informational purposes only: The final size of the baseplate is contingent upon the luminaire size. A larger luminaire will require a larger baseplate; a smaller luminaire will require a smaller baseplate.

**ABC**  
 Anchor Base Closed  
 Battery placed above ground  
 (not viable for very cold or very hot locations)  
 \*Consult factory



# PROTOS

SOLAR LUMINAIRE

## FINISH

---



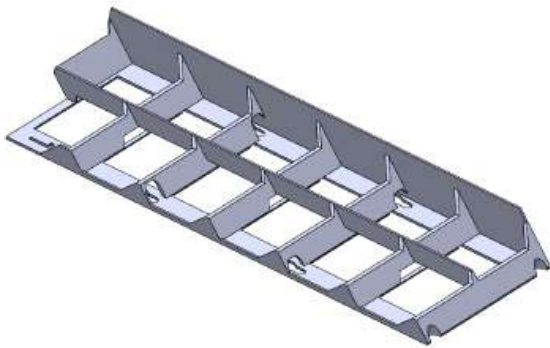
**D**  
Sparkling Iron Effect Dark  
Tiger 29/70787  
Powder Coat

## OPTIONS

---

### AGS

Anti-Glare Shield



### PIR/PILG

Each luminaire can be fitted with a PIR/PILG-sensor, a controller and an antenna. To control the luminaire in real time, only one luminaire has a GPS-controller as well as a GPS-antenna. This enables the luminaires to communicate among each other and control the demand responsive light in real time.



## DIMENSIONS — PROTOS STANDARD

For informational purposes only: The final luminaire is contingent on the installation location and the desired lumen output. Locations with reduced direct solar intake might require a pole with a larger solar panel. Custom heights are available. Drawings provided upon request.

