

HERA

SOLAR OUTDOOR

PROJECT NAME

Type _____

Date _____

SPECIFICATIONS



Source	LED
CCT	6000K standard
Efficiency	160lm/W
Power	Max 10 Watts
L80 Life	> 75,000 hours
Location	Listed IP65
Solar Module Performance	Monocrystalline silicon cells, processed by Photinus 4 solar modules x 150 Wp*, modules also charge in cloudy conditions
Battery	LiFeP04 / 474 Wh (12.8 V 37Ah)
Operating Temperature	-20°C to +60°C
Battery Life	Up to 10 years
Protection Class	IPX8
Material	Steel pole, aluminum parts and acrylic glass
Finish	Galvanized and powder coat
Weight	145.5 lb. [66kg]
Wind Load	68.3 mph, 90 mph**
Salt Spray Test	ISO 9227:2012
Warranty	3 Years

*Wp = Watt Peak: maximum power supplied in standard conditions
** Other wind loads available upon request

ORDER CODE

Model	C.C.T.	Optic	Time Management	Height	Wind Load	Mounting	Finish	Graphic
HERA	60 = 6000K	SPH = Standard	V5 = Standard Setting V3 = Continuous lighting 100% V4 = Night-time reduction to 40% V6 = Night-time reduction to 0% ◦ other time management options upon request. consult factory	HS = Standard Height HC = Custom* *specify desired height. consult factory	W68 = Standard 68.3 mph W90 = 90 mph WC = Custom* *specify desired wind load. consult factory	PF = Pipe Foundation AB = Anchor Base** **AB surface mount available upon request. consult factory	D = Dark	BLANK = none GC = Custom Graphic* *consult factory

Example order code: **HERA - 60 - SPH - V5 - HS - W90 - PF - D**

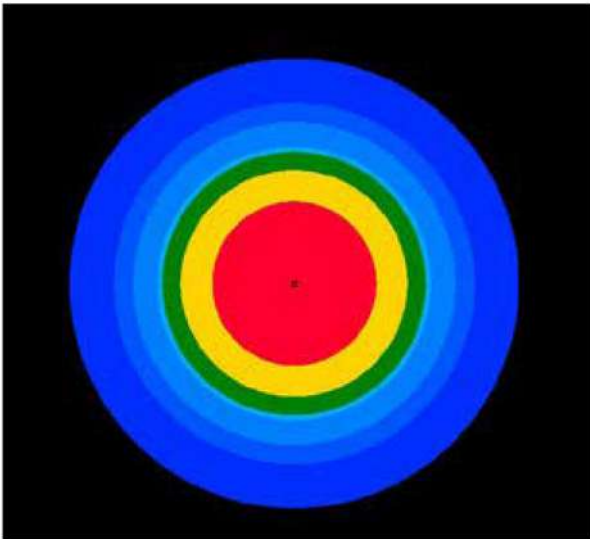
HERA

SOLAR OUTDOOR

PHOTOMETRICS

SPH

Standard Photinus Hera Optic

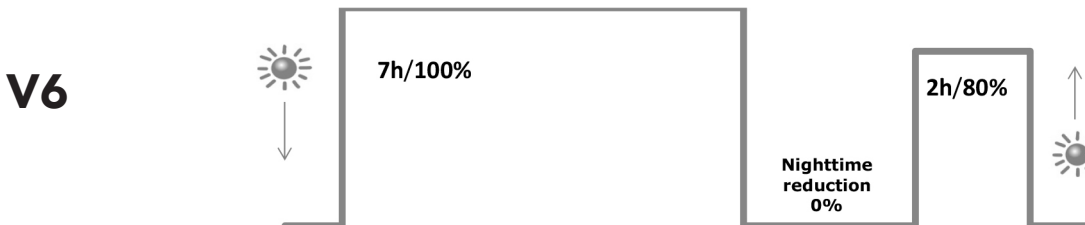
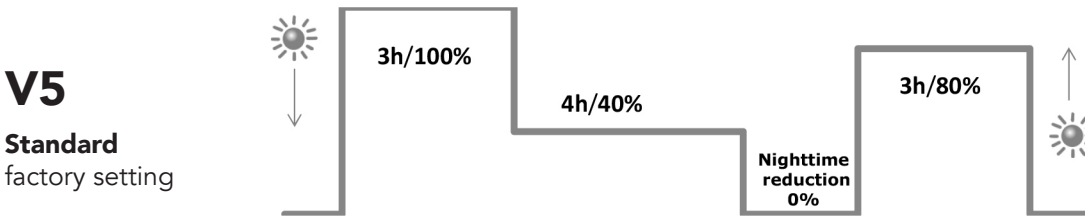
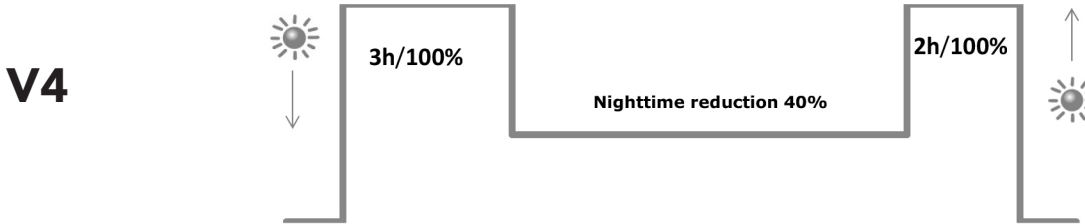
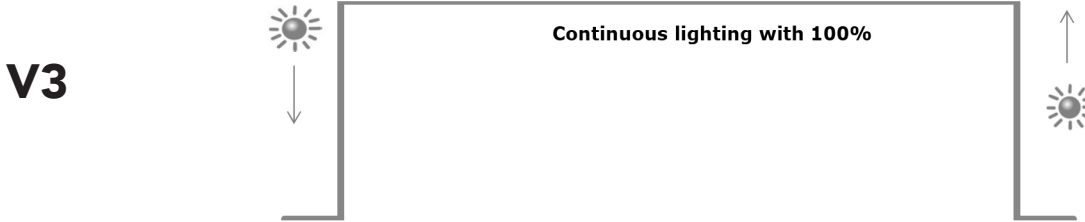


FINISH

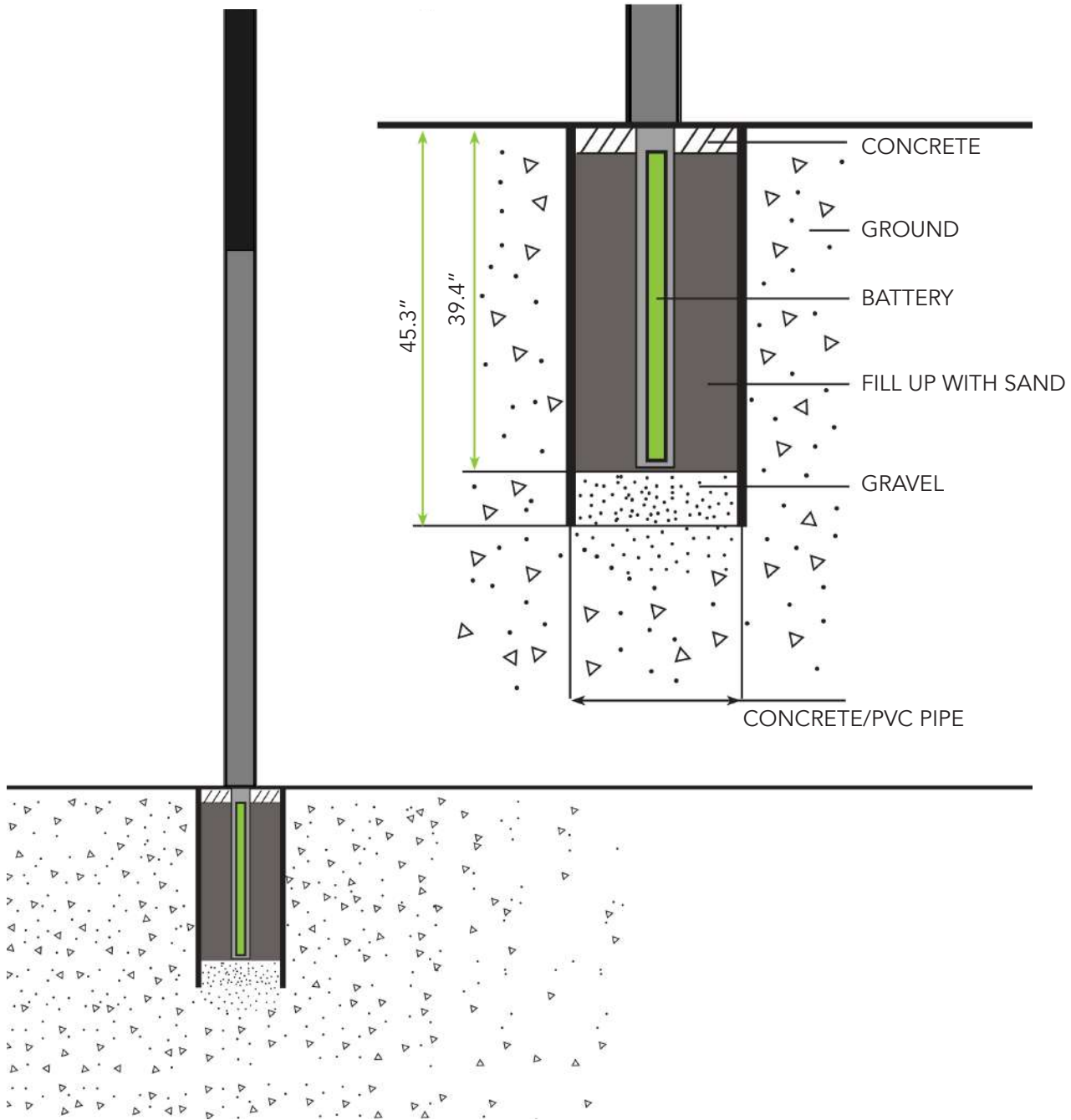


D
Sparkling Iron Effect Dark
Tiger 29/70787
Powder Coat

ENERGY AND TIME MANAGEMENT



MOUNTING OPTION 1 — PIPE FOUNDATION — PF



DIMENSIONS

